

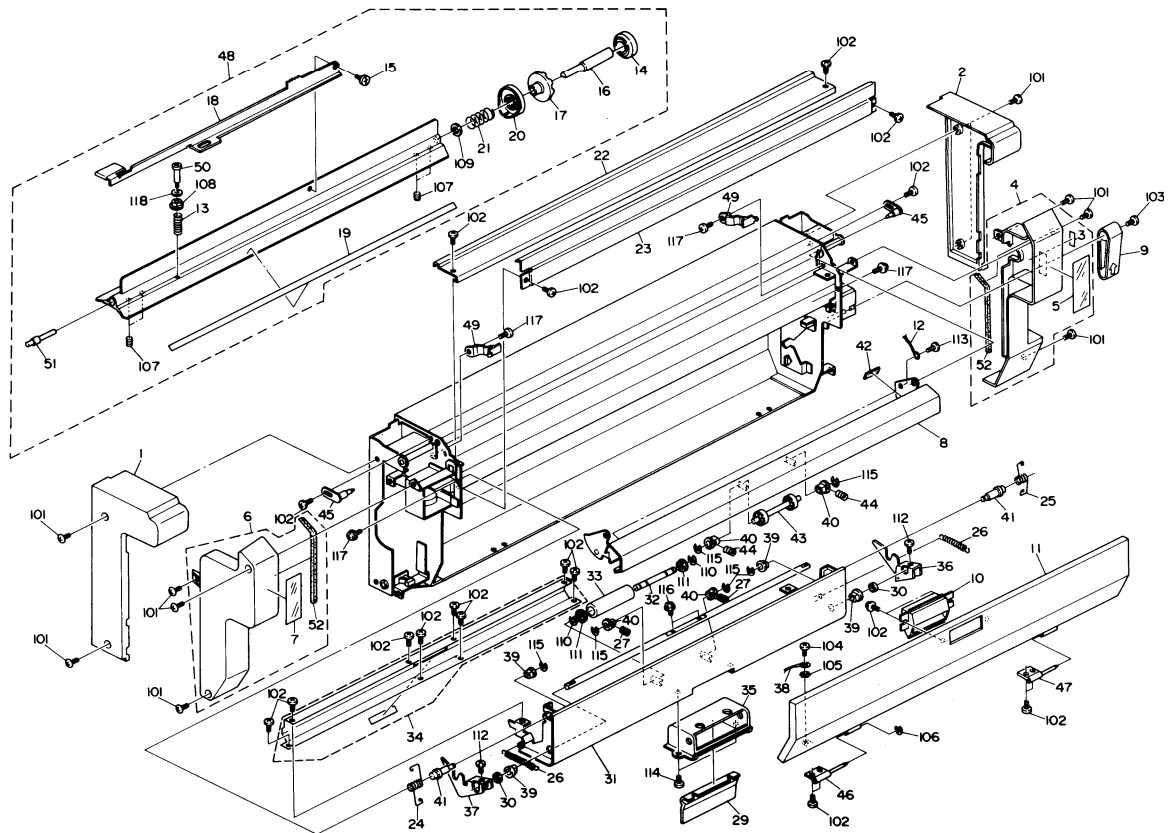
ROLL CUTTER TYPE 810

(A454)

1. Roll Cutter I (A454)	2
2. Roll Cutter II (A454)	4
3. Roll Cutter III (A454)	6
4. Roll Cutter IV (A454)	8
5. Main Board (A454)	10
6. AC Harness (A454)	12
7. DC Harness (A454)	14
8. Decal & Document (A454)	16
Parts Index	19

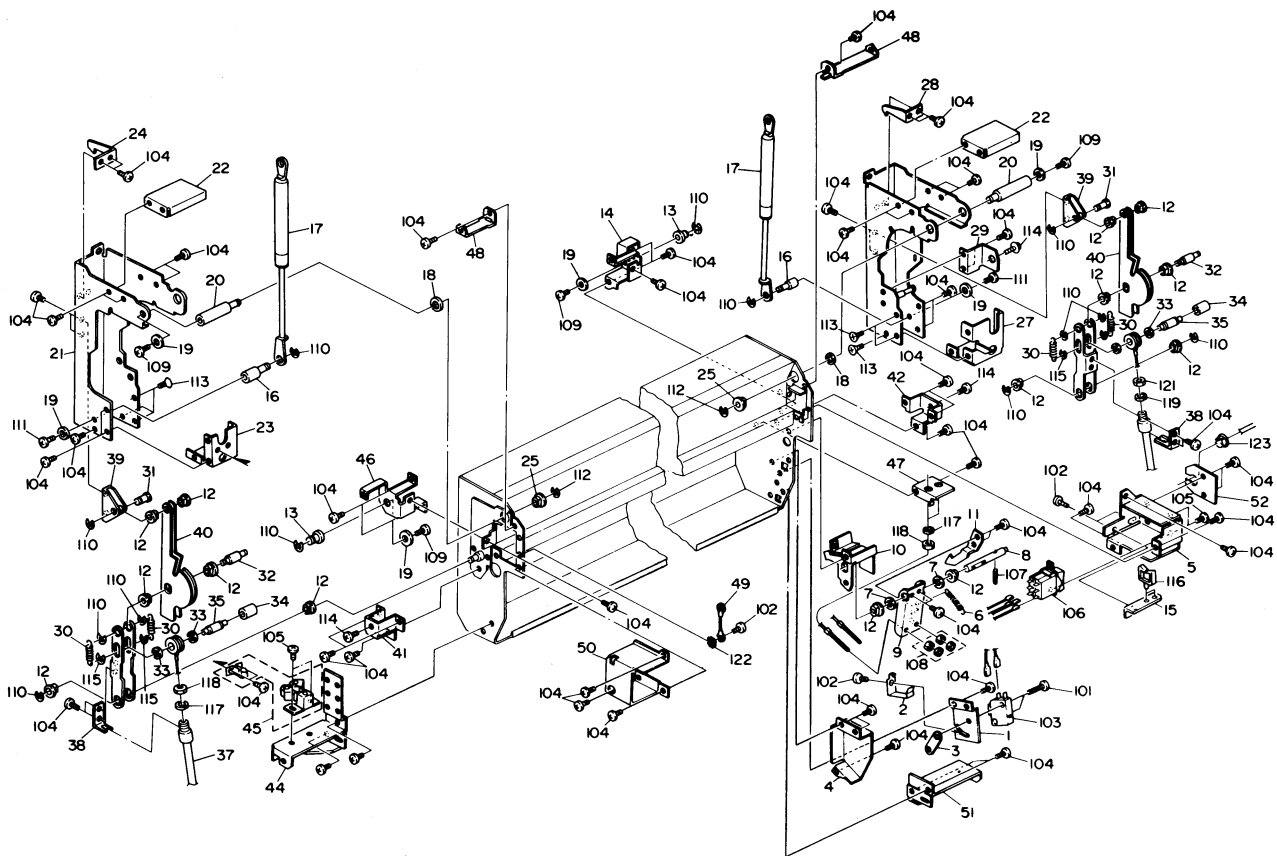
1. ROLL CUTTER I (A454)

February 01,'90



2. ROLL CUTTER II (A454)

February 01,'90



2, ROLL CUTTER II (A454)

February 01, '90

Index No.	Parts No.	Description	Q'ty Per Assembly
1	A454 5567	Microswitch Bracket	1
2	A454 5570	Spring Plate	1
3	5056 0509	Nut Plate - Microswitch	1
4	A454 5572	Microswitch Cover	1
5	A454 5582	Main Switch Bracket	1
6	AA06 0225	Grip Spring	2
7	AA13 2097	Spacer	1
8	AA14 3209	Grip Shaft	1
9	A454 6092	Lock Wire Arm	1
10	A454 6094	Grip Bracket	1
11	A454 6107	Lock Hook	1
12	5304 1639	Bushing - 8mm	12
13	AA14 3207	Gas Spring Shaft - Upper	2
14	A454 6067	Bracket - Right Gas Spring - Upper	1
15	A454 5583	DC Harness Bracket	1
16	AA14 3208	Gas Spring Shaft - Lower	2
17	A454 6102	Gas Spring	2
18	AA13 2098	Collar	2
19	A454 1084	Spacer	6
20	AA14 3210	Support Shaft	2
21	A454 6056	Left Side Plate	1
22	A454 6058	Upper Stay	2
23	A454 6060	Left Lower Stay	1
24	A454 6088	Left Hook	1
25	5414 3327	Ball Bearing - Fusing and Invertor	2
26	A454 6055	Right Side Plate	1
27	A454 6061	Right Lower Stay	1
28	A454 6089	Right Hook	1
29	A454 6108	Lock Pin Bracket	1
30	AA06 0224	Spring - Mounting Arm	4
31	AA14 8183	Shaft - Lower Mounting Arm	2
32	AA14 8184	Shaft - Support Mounting Arm	2
33	AA13 2094	Spacer - Mounting Arm	4
34	AA13 2095	Collar - Lock Arm	2
35	AA14 8185	Lock Arm Shaft	2

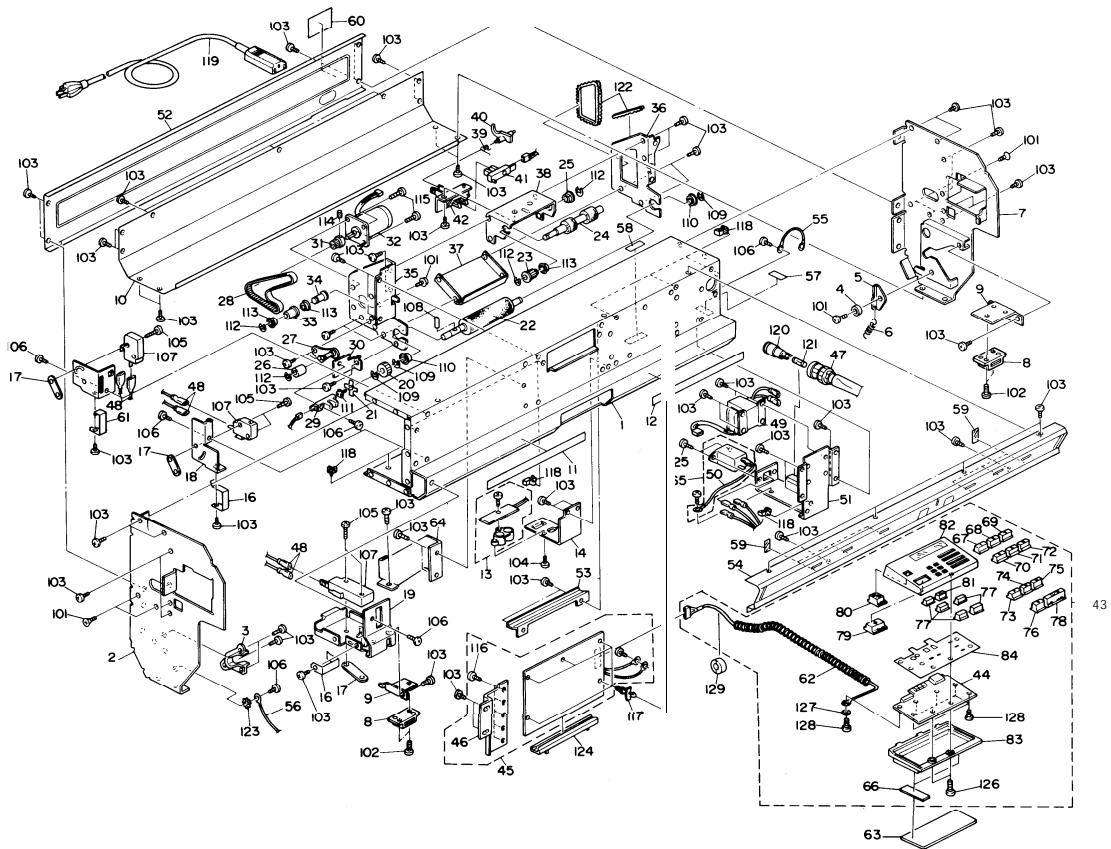
Index No.	Parts No.	Description	Q'ty Per Assembly
36	A454 6081	Upper Mounting Arm	2
37	AA05 1009	Lock Wire - Large	1
38	A454 6091	Bracket - Lock Hire Arm	2
39	A454 6075	Bracket - Lower Mounting Arm	2
40	A454 6082	Lower Mounting Arm	2
41	A454 6073	Left Bracket - Upper Mounting Arm	1
42	A454 6074	Right Bracket - Upper Mounting Arm	1
43	AA05 1010	Lock Wire - Small	1
44	A454 1079	Left Stopper Bracket	1
45	5013 0568	Roller Catch	1
46	A454 6066	Bracket - Left Gas Spring - Upper	1
47	A454 6086	Bracket	1
48	A454 1297	Bracket	2
49	A454 5171	Grounding Wire	1
50	A454 1090	Cutter Motor Cover	1
51	A454 1087	Right Stopper Bracket	1
52	A454 5584	Holder	1
101	0313 0140B	Phillips Pan Head Screw - M3x14	
102	0314 0060B	Phillips Pan Head Screw - M4x6	
103	1204 2184	Microswitch - 16A/250V	
104	0802 5169	Tapping Screw- M4x6	
105	0313 0060B	Phillips Pan Head Screw - M3x6	
106	1204 1520	Switch	
107	0623 0140E	Spring Pin - 3x14mm	
108	0701 00406	Flat Washer - M4	
109	0951 5008B	Phillips Screw With Flat Washer - M5x8	
110	0720 0060Z	Retaining Ring - M6	
111	0315 0080B	Phillips Pan Head Screw - M5x8	
112	0720 0080Z	Retaining Ring - M8	
113	0802 5175	Tapping Screw - M4x12	

Index No.	Parts No.	Description	Q'ty Per Assembly
114	0951 4006B	Phillips Screw With Flat Washer - M4x6	
115	0720 0040Z	Retaining Ring - M4	
116	11050197	Wire Saddle	
117	0701 0060B	Flat Washer - M6	
118	07100060B	Hexagon Nut - M6	
119	07000060B	Washer - 6mm	
120	07030060B	Lock Washer - M6	
121	0711 0060B	Hexagon Nut - M6	
122	0705 0040C	Teethed Washer - M4	
123	11060418	Lord Bushing	

Index No.	Parts No.	Description	Q'ty Per Assembly
-----------	-----------	-------------	-------------------

3. ROLL CUTTER III (A454)

February 01, '90



3. ROLL CUTTER III (A454)

February 01,'90

Index No.	Parts No.	Description	Q'ty Per Assembly
1	A454 1052	Base Plate	1
2	A454 1055	Left Side Plate	1
3	A454 1065	Bushing - Paper Spool	1
4	AA13 2093	Collar - Lever Stopper	1
5	5414 3536	Stopper Plate	1
6	5414 3537	Paper Spindle Spring	1
7	A454 1056	Right Side Plate	1
8	C400 3159	Magnet Catch	2
9	A454 5576	Magnet Catch Bracket	2
10	A454 1068	Base Cover	1
11	A454 1140	Left Scale Decal - A4	1
12	A454 1167	Right Scale Decal - A4	1
13	A454 5101	Paper End Sensor	1
14	A454 5558	Bracket - Paper End Sensor	1
15	A454 5565	Exit Microswitch Bracket	1
16	A454 5570	Spring Plate	2
17	50560509	Nut Plate - Microswitch	3
18	A454 5566	Microswitch Bracket	1
19	A454 5568	Microswitch Bracket	1
20	AB03 0131	Timing Pulley - 48Z	1
21	A454 1168	Encoder	1
22	AF03 1005	Drive Roller - Paper Feed	1
23	AB03 0134	Timing Pulley - 24Z	1
24	AF04 0029	Exit Drive Roller	1
25	5053 447	Bushing - 6mm	1
26	AB03 0098	Belt Tightener	1
27	A454 1185	Tightener	1
28	AA04 3049	Timing Belt - 250MXL	1
29	A009 5520	Photointerruptor	1
30	A454 1180	Sensor Bracket	1
31	AB03 0168	Timing Pulley - 16Z	1
32	A454 5151	Motor - 6V 1.2A	1
33	AF02 2031	Idler Roller - M22	1
34	AA14 3211	Idler Shaft	1
35	A454 1152	Left Base Plate	1

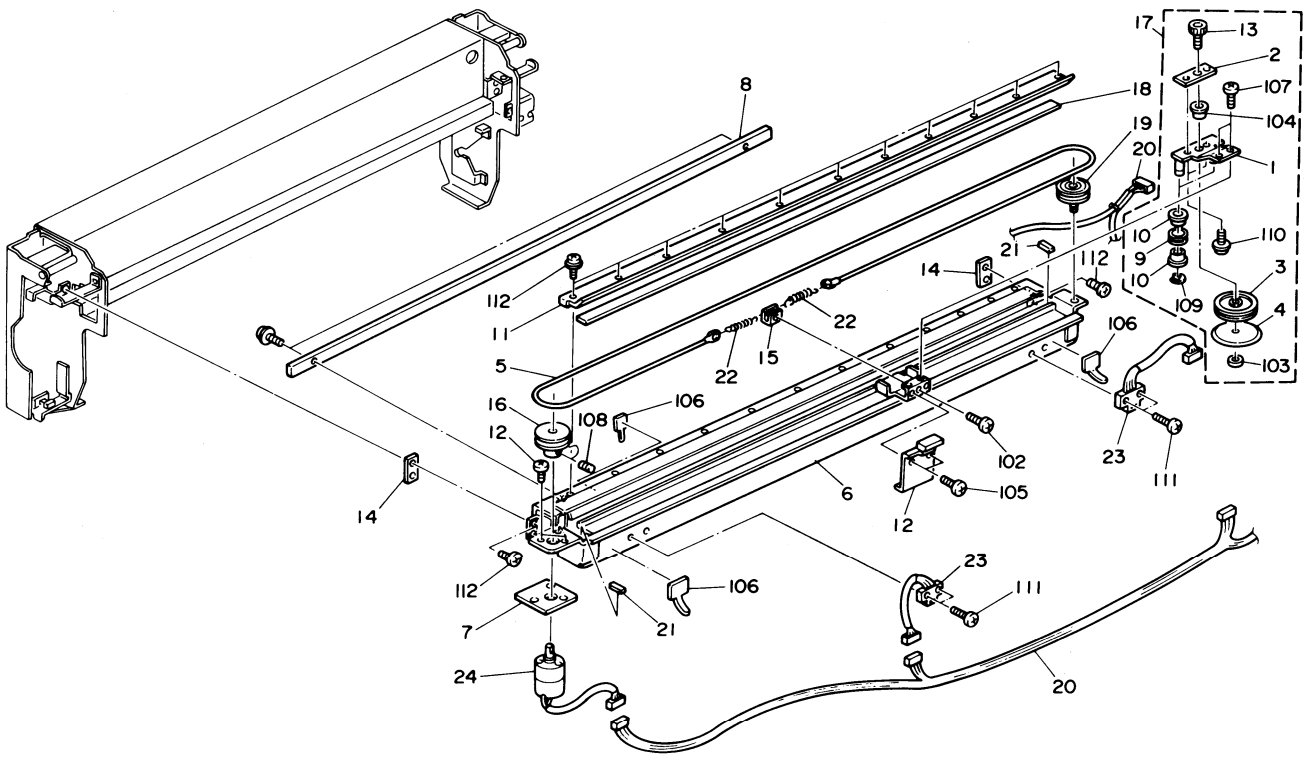
Index No.	Parts No.	Description	Q'ty Per Assembly
36	A454 1153	Right Base Plate	1
37	A454 1155	Scraper Bracket	1
38	A454 1160	Drive Stay	1
39	AA06 6045	Actuator Spring	1
40	AA11 1006	Actuator	1
41	A009 5520	Photointerruptor	1
42	A454 1162	Sensor Bracket	1
43	AG01 1263	Operation Panel Ass'y - 220/240V	1
44	A454 5071	Operation Control Board	1
45	A454 5030	Main Board - 220/240V	1
46	A454 5556	Heat Sink	1
47	A454 5085	AC Harness - 220/240V	1
48	A454 5092	OC Harness	1
49	A454 5121	Transformer - 220/240V	1
50	A454 5184	Grounding Wire - Noise Filter	1
51	A454 5590	Holder - AC Power Supply	1
52	A454 1225	Rear Cover - 220/240V	1
53	A454 1083	Harness Guide Plate	1
54	A454 4452	Exit Guide Plate	1
55	A454 5051	Grounding Wire - Main Board	1
56	A454 5585	Grounding Wire	1
57	A454 1191	Decal - Fuse - 2A/250V	1
58	A454 1192	Decal - Fuse - 3.15A/250V	1
59	A454 4453	Mylar Seal - 20x30	6
60	5446 8906	Caution Decal	1
61	A454 5571	Spring Plate - Switch Actuator	1
62	A454 5141	Operation Control Harness	1
63	A454 1488	Operation Panel Bracket	1
64	A454 1077	Base Supporting Plate	1
65	A454 5183	Noise Filter	1
66	AA02 0009	Magnet Sheet	2
67	AA11 4219	Key Top - 1	1
68	AA11 4220	Key Top - 2	1
69	AA11 4221	Key Top - 3	1
70	AA11 4222	Key Top - 4	1

Index No.	Parts No.	Description	Q'ty Per Assembly
71	AA11 4223	Key Top - 5	1
72	AA11 4224	Key Top - 6	1
73	AA11 4225	Key Top - 7	1
74	AA11 4226	Key Top - 8	1
75	AA11 4227	Key Top - 9	1
76	AA11 4228	Key Top - 0	1
77	AA11 4229	Key Top	5
78	AA11 4237	Key Top - Clear	1
79	AA11 4239	Key Top - Start	1
80	AA11 4282	Key Top - Cut	1
81	AA11 4284	Key Top - mm	1
82	A454 1452	Upper Cover	1
83	A454 1461	Lower Cover	1
84	A454 1471	Insulating Sheet	1
101	0951 4006B	Phillips Screw With Flat Washer - M4x6	1
102	0313 0060B	Phillips Pan Head Screw - M3x6	1
103	0802 5169	Tapping Screw - M4x6	1
104	0313 0080B	Phillips Pan Head Screw - M3x8	1
105	0313 0140B	Phillips Pan Head Screw - M3x14	1
106	0314 0060B	Phillips Pan Head Screw - M4x6	1
107	1204 2184	Microswitch - 16A/250V	1
108	0623 0160E	Spring Pin - 3x16mm	1
109	0720 0060Z	Retaining Ring - M6	1
110	0741 3808	Ball Bearing - 8x16x5mm	1
111	0951 3006B	Phillips Screw With Flat Washer - M3x6	1
112	0720 0040Z	Retaining Ring - M4	1
113	0741 3806	Ball Bearing - 6x13x5mm	1
114	0573 0040E	Hexagon Headless Set Screw - M3x4	1
115	0951 4010B	Phillips Screw With Flat Washer - M4x10	1
116	0313 0080B	Tapping Screw - M3x6	1

Index No.	Parts No.	Description	Q'ty Per Assembly
117	1105 0157	Lock Support	1
118	1105 0197	Wire Saddle	1
119	2801 0010	Power Supply Cord - 250V 3A	1
120	1104 0311	Fuse Holder Supporter - 220/240V	1
121	1107 0530	Fuse - 3A (115V)	1
122	11060103	Universal Bushing	1
123	0705 0040C	Toothed Washer - M4	1
124	1005 0812	Support Rail - Main Board	1
125	0964 3006B	Tapping Screw - M3x6	1
126	0413 0082B	Tapping Screw - M3x8	1
127	0701 0020B	Flat Washer - 21mm	1
128	0802 5087	Tapping Bind Screw - M2x5	1
129	1607 0332	Ferri te Core	1

4. ROLL CUTTER IV (A454)

February 01,'90



4. ROLL CUTTER IV (A454)

February 01,'90

Index No.	Parts No.	Description	Q'ty Per Assembly
1	A454 1303	Spring Plate - Cutter Pulley	1
2	A454 1314	Support Plate	1
3	A454 1324	Rotating Cutter Pulley	1
4	A454 1325	Rotating Cutter	1
5	A454 1301	Cutter Wire	1
6	A454 1304	Cutter Rail Ass'y	1
7	A454 1338	Cutter Motor Sheet	1
8	A454 1339	Cutter Spacer - 8x20x200	1
9	A454 1320	Slider Roller	2
10	A454 1333	Bushing	4
11	A454 1312	Support Plate - Plate Cutter	1
12	A454 1341	Cutter Grip	1
13	A454 1340	Cutter Screw - M6	1
14	A454 1082	Cutter Unit Sheet - 16x34	2
15	A454 1318	Wire Hook	1
16	A454 1319	Cutter Motor Pulley	1
17	A454 1300	Rotating Cutter Ass'y	1
18	A454 1326	Plate Cutter	1
19	A454 1330	Idle Pulley	1
20	A454 5304	Cutter Unit Harness	1
21	A454 1334	Cushion Pad	2
22	A454 1335	Spring	2
23	A454 5305	Photo Sensor - EE-SB5M	2
24	A454 5306	Cutter Motor - DC24V	1

Index No.	Parts No.	Description	Q'ty Per Assembly
101	0313 0080B	Phillips Pan Head Screw - M3x8	
102	0313 0060B	Phillips Pan Head Screw - M3x6	
103	0710 0060B	Hexagon Nut - M6	
104	0805 3145	Ball Bearing - 6x12x4mm	
105	0353 0060Z	Screw - M3x6	
106	0323 0080B	Phillips Sunk Screw - M3x8	
107	0344 0060F	Phillips Truss Head Screw - M4x6	
108	0573 0040E	Hexagon Headless Set Screw - M3x4	
109	0720 0020G	Retaining Ring - 2mm	
110	0950 3008B	Sem's Screw - M3x8	
111	0951 3010B	Phillips Screw With Flat Washer - M3x10	
112	0954 3008B	Phillips Screw - M4x8	

CONNECTOR

SYMBOL NO.	INDEX NO.
CN101	104
CN102	106
CN103	105
CN104	107
CN105	103
CN106	3

CAPACITOR

SYMBOL NO.	INDEX NO.
C101	152
C102	152
C103	152
C104	154
C105	144
C106	154
C107	154
C108	154
C109	154
C110	152

SYMBOL NO.	INDEX NO.
C111	152
C112	152
C113	152
C114	152
C115	155
C116	155
C117	154
C118	154
C119	154
C120	142

SYMBOL NO.	INDEX NO.
C121	143
C122	143
C123	150
C124	153
C125	151
C126	146
C127	153
C128	150
C129	149
C130	156

SYMBOL NO.	INDEX NO.
C131	147
C132	148
C133	150
C134	153
C135	153
C136	145

DIP SW

SYMBOL NO.	INDEX NO.
DPS101	111

DIODE

SYMBOL NO.	INDEX NO.
D101	119
D102	118
D103	118
D104	118
D105	118
D106	118
D107	117
D108	120
D109	118
D110	118

SYMBOL NO.	INDEX NO.
D111	118

FUSE

SYMBOL NO.	INDEX NO.
FU101	108
FU102	110
FU103	108
FU104	110

IC

SYMBOL NO.	INDEX NO.
IC101	130
IC102	2
IC103	102
IC104	4
IC105	109
IC106	125
IC107	123
IC108	126
IC109	127
IC110	124

SYMBOL NO.	INDEX NO.
IC109	128
IC110	134
IC111	135
IC112	132
IC113	1
IC114	129
IC115	172
IC116	1
IC117	133
IC118	171
IC119	172

OSC

SYMBOL NO.	INDEX NO.
OSC101	136

TRANSISTOR

SYMBOL NO.	INDEX NO.
Q101	113
Q102	114
Q103	1
Q104	115
Q105	172
Q106	1
Q107	116
Q108	172

RESISTOR ARRAY

SYMBOL NO.	INDEX NO.
RAY101	131
RAY102	131
RAY103	131

PC

SYMBOL NO.	INDEX NO.
PC101	112

RESISTOR

SYMBOL NO.	INDEX NO.
R101	162
R102	162
R103	162
R104	162
R105	162
R106	162
R107	162
R108	162
R109	157
R110	159

SYMBOL NO.	INDEX NO.
R111	161
R112	158
R113	160
R114	157
R115	140
R116	140
R117	158
R118	160
R119	160
R120	162

SYMBOL NO.	INDEX NO.
R121	139
R122	137
R123	139
R124	137
R125	163
R126	138
R127	168
R128	166
R129	169
R130	169

SYMBOL NO.	INDEX NO.
R131	169
R132	169
R133	167
R134	165
R135	164
R136	166
R137	170

TEST POINT

SYMBOL NO.	INDEX NO.
TP101	101
TP102	101
TP103	101
TP104	101
TP105	101

SYMBOL NO.	INDEX NO.
VR101	141

ZENER DIODE

SYMBOL NO.	INDEX NO.
ZD101	121
ZD102	121
ZD103	122

Index No.	Parts No.	Description	Qty Per Assembly
*	A454 5030	Main Board - 220/240V	1
1	A454 5556	Heat Sink	1
2	A008 5112	Ram Board	1
3	A454 5051	Grounding Wire - Main Board	1
4	A454 5025	Eprom - Main Board	1

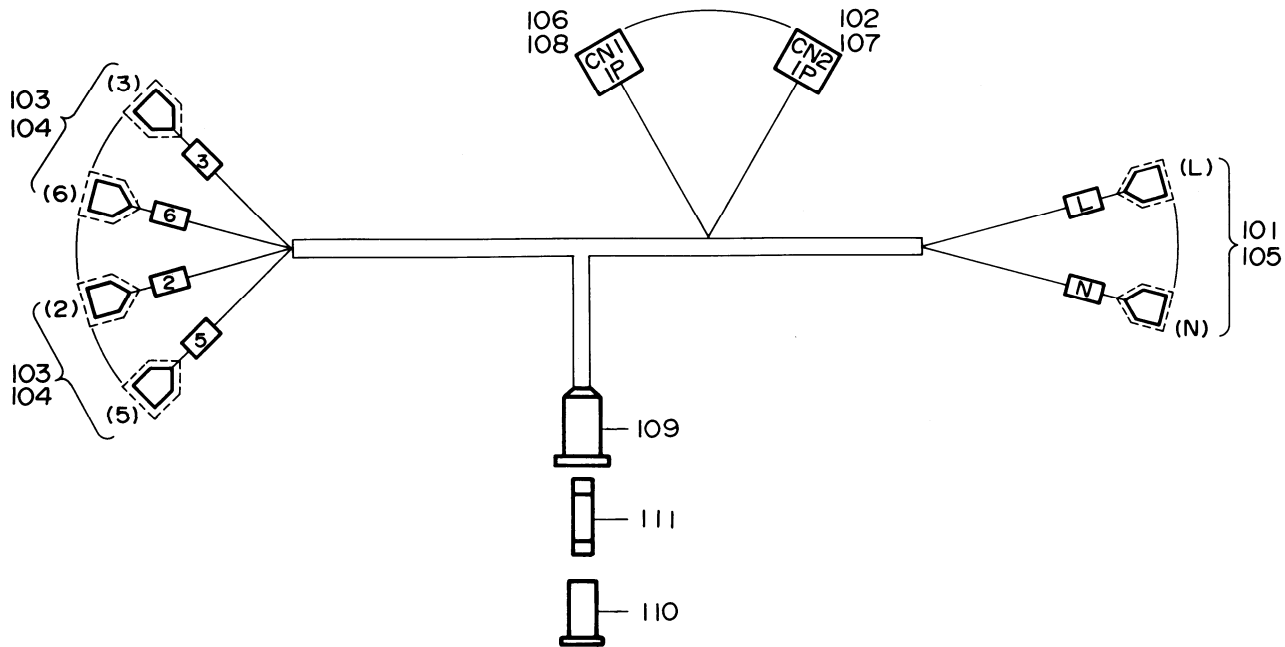
Index No.	Parts No.	Description	Qty Per Assembly
101	1100 1474	Test Pin	
102	1102 2985	Receptacle - 12P	
103	1103 0881	Connector - 4P	
104	1103 1769	Connector - 3P	
105	1103 1772	Pin Header - 6P	
106	1103 1778	Pin Header - 12P	
107	1103 1781	Pin Header - 15P (Brown)	
108	1104 0273	Fuse Holder	
109	1104 0459	IC Socket - 28P	
110	1107 0598	Fuse - 3.15A/250V (220/240V)	
111	1204 1324	DIP Switch	
112	1403 0222	Photocoupler - EE CFI	
113	1400 0238	Transistor - 2SC2002	
114	1400 0305	Transistor - 2SC1815	
115	1401 0281	Transistor - 2SD1415	
116	1401 0282	Transistor - 2S820	
117	1401 0815	Diode - 1S1588: IR	
118	1402 0073	Transistor - 2SC735Y	
119	1402 0344	Rectifier - RB151	
120	1402 0420	Rectifier - RB601	
121	1402 0486	Zener Diode - RD30FB	
122	1402 0939	Zener Diode	
123	1407 1033	IC - SN74LS253N	
124	1407 1964	IC - TD62304AP	
125	1407 2273	IC - TAB050P	
126	1407 3091	IC - TC74HC32P	
127	1407 3094	IC - TG74HC00AP	
128	1407 3217	IC - 74HC423AP	
129	1407 3218	IC - SJ-7330A	
130	1407 3241	IC - Tmpz84c011af-6	
131	1601 7077	Resistor Array - 10Ka 1/8W	
132	1408 0227	Regulator - 12V	
133	1408 0309	IC - SI-3052P	
134	1408 0418	IC - PST519A	
135	1408 0576	IC - HA17358	

Index No.	Parts No.	Description	Qty Per Assembly
136	1503 0065	Oscillator - 8MHz	
137	1600 1373	Resistor - 120Ω 1W ±5%	
138	1600 1374	Resistor - 120Ω 1W ±5%	
139	1600 1376	Resistor - 1.5Ω 5W ±5%	
140	1600 1385	Resistor - 4.7Ω 10W ±5%	
141	1601 8139	Variable Resistor - 50KΩ 0.5W	
142	1604 2181	Capacitor - 0.1μF 50V	
143	1604 2124	Capacitor - 1μF 50V ±20%	
144	1604 2125	Capacitor - 10μF 16V ±20%	
145	1604 2126	Capacitor - 1000μF 16V ±20%	
146	1604 2127	Capacitor - 2200μF 50V ±20%	
147	1604 2129	Capacitor - 0.33μF ±210% 50V	
148	1604 2180	Capacitor - 10μF ±20% 63V	
149	1604 2133	Capacitor - 22μF ±20% 50V	
150	1604 2134	Capacitor - 100μF ±20% 50V	
151	1604 2128	Capacitor - 3300μF ±20% 50V	
152	1605 0118	Capacitor - 0.01μF ±20% 25V	
153	1605 0604	Capacitor - 0.1μF 50V	
154	1605 0605	Capacitor - 0.1μF 25V	
155	1605 0606	Capacitor - 33PF ±50% 50V	
156	1606 1695	Capacitor - 0.33μF 50V	
157	1611 4102B	Resistor - 1KΩ 1/4W ±5%	
158	1611 4103B	Resistor - 10KΩ 1/4W ±5%	
159	1611 4154B	Resistor - 150KΩ 1/4W ±5%	
160	1611 4203B	Resistor - 20KΩ 1/4W ±5%	
161	1611 4204B	Resistor - 200KΩ 1/4W ±5%	
162	1611 4223B	Resistor - 22KΩ 1/4W	
163	1611 4301B	Resistor - 300Ω 1/4W ±5%	
164	1611 6102C	Resistor - 1KΩ 1/2W ±5%	
165	1611 6103C	Resistor - 10KΩ 1/2W ±5%	
166	1611 6122C	Resistor - 1.2KΩ 1/2W ±5%	
167	1611 6431C	Resistor - 430Ω 1/2W ±5%	
168	1611 6512C	Resistor - 5.1KΩ 1/2W ±5%	
169	1611 6820C	Resistor - 82Ω 1/2W ±5%	
170	1611 4222B	Resistor - 2.2KΩ ±5% 1/4W	

Index No.	Parts No.	Description	Qty Per Assembly
171	10040126	Insulating Sheet - 19x24	
172	0313 0080B	Tapping Screw - M3x6	

6. AC HARNESS (A454)

February 01,'90



6. AC HARNESS (A454)

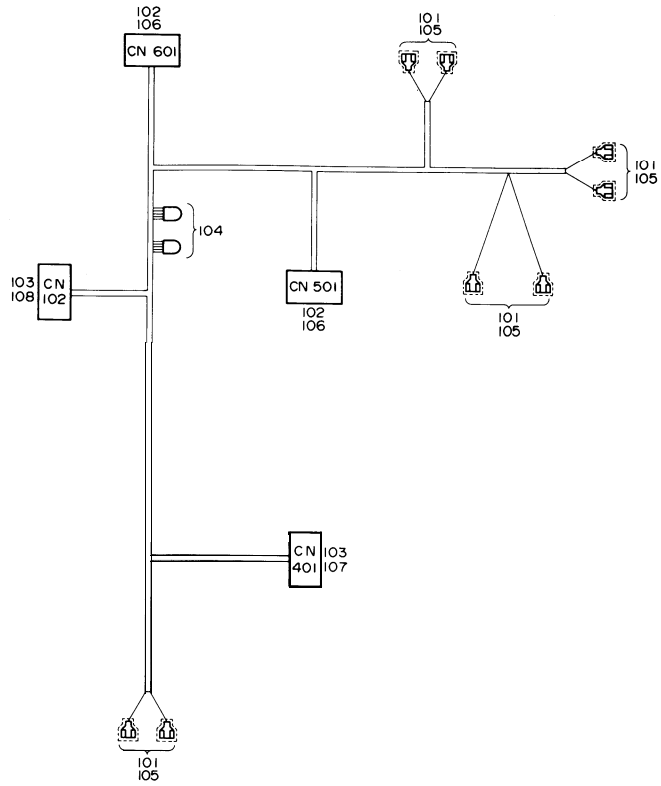
February 01,'90

Index No.	Parts No.	Description	Qty Per Assembly
*	A454 5085	AC Harness	1

Index No.	Parts No.	Description	Qty Per Assembly
101	1100 0280	Fastening Receptacle	
102	1100 1041	Pin - Mate-N-Lock	
103	1100 1117	Fastening Receptacle	
104	1102 0717	Insulating Sleeve	
105	1102 0796	Insulating Sleeve 3.0mm - 220V	
106	1100 0828	Pin - Mate-N-Lock	
107	1102 1006	Pin Housing - 1P	
108	1102 2077	Connector - 1P	
109	1104 0301	Fuse Holder	
110	1104 0311	Fuse Holder Supporter - 220/240V	
111	1107 0617	Fuse - 250V/2A	

7. DC HARNESS (A454)

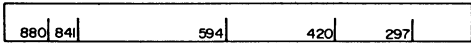
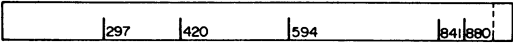
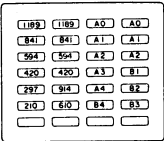

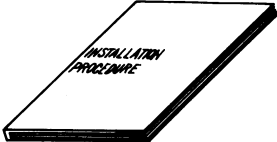

February 01,'90



7. DC HARNESS (A454)

Index No.	Parts No.	Description	Qty Per Assembly
*	A454 5092	DC Harness	1

Index No.	Parts No.	Description	Qty Per Assembly
101	1100 0277	Fastening Receptacle	
102	1100 1259	Socket - Mate-N-Lock	
103	1100 1329	Socket Contact	
104	1100 1490	Pin Contact	
105	1102 0688	Insulating Sleeve	
106	1102 1089	Connector - 3P	
107	1102 1986	Socket Housing - 6P	
108	1102 1992	Socket Housing - 12P	

<p>1</p> 	<p>3</p> <div data-bbox="724 166 968 467"> <p>Removing Mistfed Paper</p> <p>1 Pull Roll cutter release lever and lift up the roll cutter. Open Roll cutter front cover and rewind the roll paper.</p> <p>2 Make sure the paper's leading edge is straight when reset the paper in the fixed position according to its size. Close Roll cutter front cover.</p> <p>3 If the paper is left in the paper exiting cart, remove it and return the roll cutter in its original position.</p> </div>	<p>4</p> <div data-bbox="1041 166 1281 467"> <p>Adding Paper</p> <p>1 Pull Roll cutter release lever and lift up the roll cutter.</p> <p>2 Open Roll cutter front cover and take out the paper from ramp both hands.</p> <p>3 Remove the paper cover while pushing down Paper release lever.</p> <p>4 Insert the new roll paper and set its size.</p> <p>5 Set the paper into the roll cutter.</p> <p>6 Open upper guide plate on the paper lead roller and position the paper's leading edge according to its size. Close upper guide plate and roll cutter front cover.</p> <p>7 Lift up the roll cutter release lever and return roll cutter to its original position.</p> </div>
<p>2</p> 	<p>9</p> 	<p>11</p> <div data-bbox="1078 519 1256 712"> <p>CAUTION</p> <p>THIS UNIT HAS MORE THAN ONE POWER-SUPPLY CORD. DISCONNECT TWO POWER-SUPPLY CORDS BEFORE SERVICING TO AVOID ELECTRICAL SHOCK.</p> <p>ACHTUNG</p> <p>VOR ENTFERNEN DER RÜCKWAHRT ALLE NETZSTECKER ZIEHEN.</p> </div>
<p>5</p> 	<p>10</p> 	<p>12</p> 
<p>6</p> <div data-bbox="124 746 193 926"> <p>I On</p> <p>Off O</p> </div>	<p>7</p> <div data-bbox="285 801 454 868"> <p>WARNING FOR CONTINUED PROTECTION AGAINST RISK OF FIRE REPLACE ONLY WITH SAME TYPE AND RATING OF FUSE RATED</p> </div>	<p>8</p> <div data-bbox="498 801 666 868"> <p>WARNING FOR CONTINUED PROTECTION AGAINST RISK OF FIRE REPLACE ONLY WITH SAME TYPE AND RATING OF FUSE RATED</p> </div>

8. DECAL& DOCUMENT (A454)

February 01, '90

Index No.	Parts No.	Description	Q'ty Per Assembly
1	A454 1140	Left Scale Decal - A4	1
2	A454 1167	Right Scale Decal - A4	1
2	A309 1326	Right Scale Decal - German	1
2	A309 1319	Right Scale Decal - French	1
2	A309 1339	Right Scale Decal - Italian	1
2	A309 1346	Right Scale Decal - Spanish	1
3	A454 1282	Decal - Removing Misfed Paper	1
4	A454 1286	Decal - Adding Paper	1
5	A454 2720	Decal - Paper Spool Scale - A4	1
6	A023 1336	Decal - Main Switch	1
7	A454 1191	Decal - Fuse - 2A/250V	1
8	A454 1192	Decal - Fuse - 3.15A/250V	1
9	AA00 2112	Decal - Operation Panel Ass'y	1
10	A454 8615	Installation Procedure - 5 Languages	1
11	5446 8906	Caution Decal	1
12	A454 2546	Decal - Front Cover	1
13	A309 1324	Decal Set - RC - German	1
13	A309 1317	Decal Set - RC - French	1
13	A309 1337	Decal Set - RC - Italian	1
13	A309 1344	Decal Set - RC - Spanish	1

Index No.	Parts No.	Description	Q'ty Per Assembly

PARTS INDEX

Parts No.	Description	Page and Index No.
A454 1052	Base Plate	7- 1
A454 1055	Left Side Plate	7- 2
A454 1056	Right Side Plate	7- 7
A454 1065	Bushing - Paper Spool	7- 3
A454 1068	Base Cover	7-10
A454 1071	Lower Cutter Cover	3-22
A454 1074	Upper Cutter Cover	3-23
A454 1077	Base Supporting Plate	7-64
A454 1079	Left Stopper Bracket	5-44
A454 1082	Cutter Unit Sheet - 16x34	9-14
A454 1083	Harness Guide Plate	7-53
A454 1084	Spacer	5-19
A454 1087	Right Stopper Bracket	5-51
A454 1090	Cutter Motor Cover	5-50
A454 1140	Left Scale Decal - A4	7-11
A454 1140	Left Scale Decal - A4	17- 1
A454 1152	Left Base Plate	7-35
A454 1153	Right Base Plate	7-36
A454 1155	Scraper Bracket	7-37
A454 1160	Drive Stay	7-38
A454 1162	Sensor Bracket	7-42
A454 1167	Right Scale Decal - A4	7-12
A454 1167	Right Scale Decal - A4	17- 2
A454 1168	Encoder	7-21
A454 1172	Collar - M6	3-30
A454 1180	Sensor Bracket	7-30
A454 1185	Tightener	7-27
A454 1191	Decal - Fuse - 2A/250V	7-57
A454 1191	Decal - Fuse - 2A/250V	17- 7
A454 1192	Decal - Fuse - 3.15A/250V	7-58
A454 1192	Decal - Fuse - 3.15A/250V	17- 8
A454 1225	Rear Cover - 220/240V	7-52
A454 1252	Front Cover	3-11
A454 1263	Left Rear Cover	3- 1
A454 1265	Right Rear Cover	3- 2

Parts No.	Description	Page and Index No.
A454 1272	Left Front Cover - A4	3- 6
A454 1277	Right Front Cover - A4	3- 4
A454 1279	Cushion Seal - 10x18x160	3-52
A454 1282	Decal - Removing Misfeed Paper	3- 7
A454 1282	Decal - Removing Misfeed Paper	17- 3
A454 1286	Decal - Adding paper	3- 5
A454 1286	Decal - Adding Paper	17- 4
A454 1297	Bracket	5-48
A454 1300	Rotating Cutter Ass'y	9-17
A454 1301	Cutter Wire	9- 5
A454 1303	Spring Plate - Cutter Pulley	9- 1
A454 1304	Cutter Rail Ass'y	9- 6
A454 1312	Support Plate - Plate Cutter	9-11
A454 1314	Support Plate	9- 2
A454 1318	Wire Hook	9-15
A454 1319	Cutter Motor Pulley	9-16
A454 1320	Slider Roller	9- 9
A454 1324	Rotating Cutter Pulley	9- 3
A454 1325	Rotating Cutter	9- 4
A454 1326	Plate Cutter	9-18
A454 1330	Idle Pulley	9-19
A454 1333	Bushing	9-10
A454 1334	Cushion Pad	9-21
A454 1335	Spring	9-22
A454 1338	Cutter Motor Sheet	9- 7
A454 1339	Cutter Spacer - 8x20x200	9- 8
A454 1340	Cutter Screw - M6	9-13
A454 1341	Cutter Grip	9-12
A454 1452	Upper Cover	7-82
A454 1461	Lower Cover	7-83
A454 1471	Insulating Sheet	7-84
A454 1488	operation Panel Bracket	7-63
A454 2546	Decal - Front Cover	3-53
A454 2546	Decal - Front Cover	17-12
A454 2548	Base Plate - Paper Feed	3-31

Parts No.	Description	Page and Index No.
A454 2565	Guide Plate - Paper Feed	3-34
A454 2573	Drive Grip Cover	3-35
A454 2578	Right Hook	3-36
A454 2579	Left Hook	3-37
A454 2701	Paper Spool Unit	3-48
A454 2707	Brake - Paper Spool Unit	3-17
A454 2717	Lever - Paper Spool Unit	3-18
A454 2720	Decal - Paper Spool Scale - A4	3-19
A454 2720	Decal - Paper Spool Scale - A4	17- 5
A454 4452	Exit Guide Plate	7-54
A454 4453	Mylar Seal - 20x30	7-59
A454 4465	Guide Plate	3- 8
A454 4470	Support Plate	3-45
A454 4477	Exit Latch Plate	3-49
A454 5025	Eprom - Main Board	11- 4
A454 5030	Main Board - 220/240V	7-45
A454 5030	Main Board - 220/240V	11- *
A454 5051	Grounding Wire - Main Board	7-55
A454 5051	Grounding Wire - Main Board	11- 3
A454 5071	Operation Control Board	7-44
A454 5085	AC Harness - 220/240V	7-47
A454 5085	AC Harness	13- *
A454 5092	DC Harness	7- 48
A454 5092	DC Harness	15- *
A454 5101	Paper End Sensor	7-13
A454 5121	Transformer - 220/240V	7-49
A454 5141	Operation Control Harness	7-62
A454 5151	Motor - 6V 1.2A	7-32
A454 5171	Grounding Wire	3-12
A454 5171	Grounding Wire	5-49
A454 5183	Noise Filter	7-65
A454 5184	Grounding Wire - Noise Filter	7-50
A454 5304	Cutter Unit Harness	9-20
A454 5305	Photo Sensor - EE-SB5M	9-23
A454 5306	Cutter Motor - DC24V	9-24

Parts No.	Description	Page and Index No.
A454 5556	Heat Sink	7-46
A454 5556	Heat Sink	11- 1
A454 5558	Bracket - Paper End Sensor	7-14
A454 5565	Exit Microswitch Bracket	7-15
A454 5566	Microswitch Bracket	7-18
A454 5567	Microswitch Bracket	5- 1
A454 5568	Microswitch Bracket	7-19
A454 5570	Spring Plate	5- 2
A454 5570	Spring Plate	7-16
A454 5571	Spring Plate - Switch Actuator	7-61
A454 5572	Microswitch Cover	5- 4
A454 5576	Magnet Catch Bracket	7- 9
A454 5582	Main Switch Bracket	5- 5
A454 5583	DC Harness Bracket	5-15
A454 5584	Holder	5-52
A454 5585	Grounding Wire	3-38
A454 5585	Grounding Wire	7-56
A454 5590	Holder - AC Power Supply	7-51
A454 6055	Right Side Plate	5-26
A454 6056	Left Side Plate	5-21
A454 6058	Upper Stay	5-22
A454 6060	Left Lower Stay	5-23
A454 6061	Right Lower Stay	5-27
A454 6066	Bracket - Left Gas Spring - Upper	5-46
A454 6067	Bracket - Right Gas Spring - Upper	5-14
A454 6073	Left Bracket - Upper Mounting Arm	5-41
A454 6074	Right Bracket - Upper Mounting Arm	5-42
A454 6075	Bracket - Lower Mounting Arm	5-39
A454 6081	Upper Mounting Arm	5-36
A454 6082	Lower Mounting Arm	5-40
A454 6086	Bracket	5-47
A454 6088	Left Hook	5-24
A454 6089	Right Hook	5-28
A454 6091	Bracket - Lock Wire Arm	5-38
A454 6092	Lock Wire Arm	5- 9

Parts No.	Description	Page and Index No.
A454 6094	Grip Bracket	5-10
A454 6102	Gas Spring	5-17
A454 6107	Lock Hook	5-11
A454 6108	Lock Pin Bracket	5-29
A454 8615	Installation Procedure - 5 Languages	17-10

Parts No.	Description	Page and Index No.
A008 5112	Ram Board	11- 2
A009 5520	Photointerruptor	7-29
A009 5520	Photointerruptor	7-41
A023 1336	Decal - Main Switch	3- 3
A023 1336	Decal - Main Switch	17- 6
A309 1317	Decal Set - RC - French	17-13
A309 1319	Right Scale Decal - French	17- 2
A309 1324	Decal Set - RC - German	17-13
A309 1326	Right Scale Decal - German	17- 2
A309 1337	Decal Set - RC - Italian	17-13
A309 1339	Right Scale Decal - Italian	17- 2
A309 1344	Decal Set - RC - Spanish	17-13
A309 1346	Right Scale Decal - Spanish	17- 2

Parts No.	Description	Page and Index No.
AA00 2112	Decal - Operation Panel Ass'y	17- 9
AA02 0009	Magnet Sheet	7-66
AA04 3049	Timing Belt - 250MXL	7-28
AA05 1009	Lock Wire - Large	5-37
AA05 1010	Lock Wire - Small	5-43
AA06 0224	Spring - Mounting Arm	5-30
AA06 0225	Grip Spring	5- 6
AA06 0226	Spring - Front Cover Grip	3-26
AA06 3120	Spring - Paperfeed Roller	3-27
AA06 3122	Exit Roller Spring	3-44
AA06 3139	Lever Spring	3-13
AA06 6045	Actuator Spring	7-39
AA06 6046	Left Torsion Spring	3-24
AA06 6050	Right Torsion Spring	3-25
AA11 1006	Actuator	7-40
AA11 4219	Key Top - 1	7-67
AA11 4220	Key Top - 2	7-68
AA11 4221	Key Top - 3	7-69
AA11 4222	Key Top - 4	7-70
AA11 4223	Key Top - 5	7-71
AA11 4224	Key Top - 6	7-72
AA11 4225	Key Top - 7	7-73
AA11 4226	Key Top - 8	7-74
AA11 4227	Key Top - 9	7-75
AA11 4228	Key Top - 0	7-76
AA11 4229	Key Top	7-77
AA11 4237	Key Top - Clear	7-78
AA11 4239	Key Top - Start	7-79
AA11 4282	Key Top - Cut	7-80
AA11 4284	Key Top - mm	7-81
AA13 2093	Collar - Lever Stopper	7- 4
AA13 2094	Spacer - Mounting Arm	5-33
AA13 2095	Collar - Lock Arm	5-34
AA13 2097	Spacer	5- 7
AA13 2098	Collar	5-18

Parts No.	Description	Page and Index No.
AA13 2100	Collar - Paper Spool Unit	3-14
AA14 0256	Paper Feed Roller Shaft	3-32
AA14 0257	Drive Grip Shaft	3-28
AA14 3206	Drive Support Shaft	3-41
AA14 3207	Gas Spring Shaft - Upper	5-13
AA14 3208	Gas Spring Shaft - Lower	5-16
AA14 3209	Grip Shaft	5- 8
AA14 3210	Support Shaft	5-20
AA14 3211	Idler Shaft	7-34
AA14 3253	Pin - Lever - Paper Spool Unit	3-50
AA14 8060	Shaft - Paper Spool Unit - Left	3-51
AA14 8066	Shaft - Paper Spool Unit - Right	3-16
AA14 8183	Shaft - Lower Mounting Arm	5-31
AA14 8184	Shaft - Support Mounting Arm	5-32
AA14 8185	Lock Arm Shaft	5-35
AA16 1049	Rubber Seal - 19x35	3-42
AB03 0098	Belt Tightener	7-26
AB03 0131	Timing Pulley - 48Z	7-20
AB03 0134	Timing Pulley - 24Z	7-23
AB03 0168	Timing Pulley - 16Z	7-31
AF02 2031	Idler Roller - M22	7-33
AF02 2033	Paper Feed Roller	3-33
AF02 2034	Exit Roller	3-43
AF03 1005	Drive Roller - Paper Feed	7-22
AF04 0029	Exit Drive Roller	7-24
AG01 1263	Operation Panel Ass'y - 220/240V	7-43
AG05 0017	Grip	3- 9
AG05 0039	Drive Grip	3-29
AG05 1057	Front Cover Grip	3-10
AG06 1010	Left Hinge	3-46
AG06 1011	Right Hinge	3-47
C400 3159	Magnet Catch	7- 8

Parts No.	Description	Page and Index No.
5013 0568	Roller Catch	5-45
5053 0447	Bushing - 6mm	3-39
5053 0447	Bushing - 61mm	7-25
5056 0509	Nut Plate - Microswitch	5- 3
5056 0509	Nut Plate - Microswitch	7-17
5304 1639	Bushing - 8mm	5-12
5413 1882	Stepped Screw	3-15
5414 3327	Ball Bearing - Fusing and Invertor	5-25
5414 3533	Spindle Disk	3-20
5414 3534	Brake Spring	3-21
5414 3536	Stopper Plate	7- 5
5414 3537	Paper Spindle Spring	7- 6
5442 2751	Bushing - Upper Registrati on Roller	3-40
5446 8906	Caution Decal	7-60
5446 8906	Caution Decal	17-11

Parts No.	Description	Page and Index No.
0313 0060B	Phillips Pan Head Screw - M3x6	3-112
0313 0060B	Phillips Pan Head Screw - M3x6	5-105
0313 0060B	Phillips Pan Head Screw - M3x6	7-102
0313 0060B	Phillips Pan Head Screw - M3x6	9-102
0313 0080B	Phillips Pan Head Screw - M3x8	7-104
0313 0080B	Tapping Screw - M3x6	7-116
0313 0080B	Phillips Pan Head Screw - M3x8	9-101
0313 0080B	Tapping Screw - M3x6	11-172
0313 0140B	Phillips Pan Head Screw - M3x14	5-101
0313 0140B	Phillips Pan Head Screw - M3x14	7-105
0314 0060B	Phillips Pan Head Screw - M4x6	3-104
0314 0060B	Phillips Pan Head Screw - M4x6	3-113
0314 0060B	Phillips Pan Head Screw - M4x6	5-102
0314 0060B	Phillips Pan Head Screw - M4x6	7-106
0315 0080B	Phillips Pan Head Screw - M5x8	5-111
0323 0080B	Phillips Sunk Screw - M3x8	9-106
0324 0060E	Phillips Sunken Head Screw - M4x6	3-114
0344 0060F	Phillips Truss Head Screw - M4x6	9-107
0353 0060Z	Screw - M3x6	9-105
0413 0082B	Tapping Screw - M3x8	7-126
0573 0040E	Hexagon Headless Set Screw - M3x4	7-114
0573 0040E	Hexagon Headless Set Screw - M3x4	9-108
0575 0050F	Hexagon Headless Set Screw - M5x5	3-107
0623 0140E	Spring Pin - 3x14mm	5-107
0623 0160E	Spring Pin - 3x16mm	7-108
0700 0060B	Washer - 6mm	5-119
0701 00206	Flat Washer - 2mm	7-127
0701 00406	Flat Washer - M4	5-108
0701 0060B	Flat Washer - M6	5-117
0703 0060B	Lock Washer - M6	5-120
0705 0040C	Toothed Washer - M4	3-105
0705 0040C	Toothed Washer - M4	5-122
0705 0040C	Toothed Washer - M4	7-123
0710 0060B	Hexagon Nut - M6	5-118
0710 0060B	Hexagon Nut - M6	9-103

Parts No.	Description	Page and Index No.
0711 00606	Hexagon Nut - M6	5-121
0720 0020G	Retaining Ring - 21mm	9-109
0720 0020Z	Retaining Ring - M2	3-106
0720 0040Z	Retaining Ring - M4	3-115
0720 0040Z	Retaining Ring - M4	5-115
0720 0040Z	Retaining Ring - M4	7-112
0720 0060Z	Retaining Ring - M6	3-110
0720 0060Z	Retaining Ring - M6	5-110
0720 0060Z	Retaining Ring - M6	7-109
0720 0080Z	Retaining Ring - M8	5-112
0740 1308	Ball Bearing - 8x28x9mm	3-111
0741 3806	Ball Bearing - 6x13x5mm	7-113
0741 3808	Ball Bearing - 8x16x51111	7-110
0802 5087	Tapping Blind Screw - M2x5	7-128
0802 5094	Tapping Truss Head Screw - M4x8	3-101
0802 5169	Tapping Screw - M4x6	3-102
0802 5169	Tapping Screw- M4x6	5-104
0802 5169	Tapping Screw - M4x6	7-103
0802 5175	Tapping Screw - M4x12	5-113
0805 3145	Ball Bearing - 6x12x4mm	9-104
0805 3384	Bushing - 5mm	3-108
0807 4083	Washer 5mm	3-118
0807 5053	Washer	3-109
0950 3008B	Sem's Screw - M3x8	9-110
0951 3006B	Phillips Screw With Flat Washer - M3x6	7-111
0951 3008B	Phillips Screw With Flat Washer - M3x8	3-116
0951 3010B	Phillips Screw With Flat Washer - M3x10	9-111
0951 4006B	Phillips Screw With Flat Washer - M4x6	3-117
0951 4006B	Phillips Screw With Flat Washer - M4x6	5-114
0951 4006B	Phillips Screw With Flat Washer - M4x6	7-101
0951 4008B	Phillips Screw With Flat Washer - M4x8	3-103
0951 4010B	Phillips Screw With Flat Washer - M4x10	7-115
0951 5008B	Phillips Screw With Flat Washer - M5x8	5-109
0954 3008B	Phillips Screw - M4x8	9-112
0964 3006B	Tapping Screw - M3x6	7-125

Parts No.	Description	Page and Index No.
1004 0126	Insulating Sheet - 19x24	11-171
1005 0812	Support Rail - Main Board	7-124
1100 0277	Fastening Receptacle	15-101
1100 0280	Fastening Receptacle	13-101
1100 0828	Pin - Mate-N-Lock	13-106
1100 1041	Pin - Mate-N-Lock	13-102
1100 1117	Fastening Receptacle	13-103
1100 1259	Socket - Mate-N-Lock	15-102
1100 1329	Socket Contact	15-103
1100 1474	Test Pin	11-101
1100 1490	Pin Contact	15-104
1102 0688	Insulating Sleeve	15-105
1102 0717	Insulating Sleeve	13-104
1102 0796	Insulating Sleeve 3.0mm - 220V	13-105
1102 1006	Pin Housing - 1P	13-107
1102 1089	Connector - 3P	15-106
1102 1986	Socket Housing - 6P	15-107
1102 1992	Socket Housing - 12P	15-108
1102 2077	Connector - 1P	13-108
1102 2985	Receptacle - 12P	11-102
1103 0881	Connector - 4P	11-103
1103 1769	Connector - 3P	11-104
1103 1772	Pin Header - 6P	11-105
1103 1778	Pin Header - 12P	11-106
1103 1781	Pin Header - 15P (Brown)	11-107
1104 0273	Fuse Holder	11-108
1104 0301	Fuse Holder	13-109
11040311	Fuse Holder Supporter - 220/240V	7-120
11040311	Fuse Holder Supporter - 220/240V	13-110
1104 0459	IC Socket - 28P	11-109
11050157	Lock Support	7-117
11050197	Wire Saddle	5-116
11050197	Wire Saddle	7-118
11060103	Universal Bushing	7-122
11060418	Cord Bushing	5-123

Parts No.	Description	Page and Index No.
1107 0530	Fuse - 3A (115V)	7-121
1107 0598	Fuse - 3.15A/250V (220/240V)	11-110
1107 0617	Fuse - 250V/2A	13-111
1204 1324	DIP Switch	11-111
1204 1520	Switch	5-106
1204 2184	Microswitch - 16A/250V	5-103
1204 2184	Microswitch - 16A/250V	7-107
1400 0238	Transistor - 2SC2002	11-113
1400 0305	Transistor - 2SC1815	11-114
1401 0281	Transistor - 2SD1415	11-115
1401 0282	Transistor - 2SB20	11-116
1401 0815	Diode - 1S1588: IR	11-117
1402 0073	Transistor - 2SC735Y	11-118
1402 0344	Rectifier - RB151	11-119
1402 0420	Rectifier - RB601	11-120
1402 0486	Zener Diode - RD30FB	11-121
1402 0939	Zener Diode	11-122
1403 0222	Photocoupler - EE CFI	11-112
1407 1033	IC - SN74LS253N	11-123
1407 1964	IC - TD62304AP	11-124
1407 2273	IC - TA8050P	11-125
1407 3091	IC - TC74HC32P	11-126
1407 3094	IC - TG74HC00AP	11-127
1407 3217	IC - 74HC423AP	11-128
1407 3218	IC - SJ-7330A	11-129
1407 3241	IC - Tmpz84C01laf-6	11-130
1408 0227	Regulator - 12V	11-132
1408 0309	IC - SI-3052P	11-133
1408 0418	IC - PST519A	11-134
1408 0576	IC - HA17358	11-135
1503 0065	Oscillator - 8MHz	11-136
1600 1373	Resistor - 120 Ω 1W \pm 5%	11-137
1600 1374	Resistor - 120 Ω 1W \pm 5%	11-138
1600 1376	Resistor - 1.5 Ω 5W \pm 5%	11-139
1600 1385	Resistor - 4.7 Ω 10W \pm 5%	11-140

Parts No.	Description	Page and Index No.
1601 7077	Resistor Array - 10K Ω 1/8W	11-131
1601 8139	Variable Resistor - 50K Ω 0.5W	11-141
1604 2124	Capacitor - 1 μ F 50V \pm 20%	11-143
1604 2125	Capacitor - 10 μ F 16V \pm 20%	11-144
1604 2126	Capacitor - 1000 μ F 16V \pm 20%	11-145
1604 2127	Capacitor - 2200 μ F 50V \pm 20%	11-146
1604 2128	Capacitor - 3300 μ F \pm 20% 50V	11-151
1604 2129	Capacitor - 0.33 μ F \pm 210% 50V	11-147
1604 2133	Capacitor - 22 μ F \pm 20% 50V	11-149
1604 2134	Capacitor - 100 μ F \pm 20% 50V	11-150
1604 2180	Capacitor - 10 μ F \pm 20% 63V	11-148
1604 2181	Capacitor - 0.1 μ F 50V	11-142
1605 0118	Capacitor - 0.01 μ F \pm 20% 25V	11-152
1605 0604	Capacitor - 0.1 μ F 50V	11-153
1605 0605	Capacitor - 0.1 μ F 25V	11-154
1605 0606	Capacitor - 33PF \pm 50% 50V	11-155
1606 1695	Capacitor - 0.33 μ F 50V	11-156
1607 0332	Ferrite Core	7-129
1611 4102B	Resistor - 1K Ω 1/4W \pm 5%	11-157
1611 4103B	Resistor - 10K Ω 1/4W \pm 5%	11-158
1611 4154B	Resistor - 150K Ω 1/4W \pm 5%	11-159
1611 4203B	Resistor - 20K Ω 1/4W \pm 5%	11-160
1611 4204B	Resistor - 200K Ω 1/4W \pm 5%	11-161
1611 4222B	Resistor - 2.2K Ω \pm 5% 1/4W	11-170
1611 4223B	Resistor - 22K Ω 1/4W	11-162
1611 4301B	Resistor - 300 Ω 1/4W \pm 5%	11-163
1611 6102C	Resistor - 1K Ω 1/2W \pm 5%	11-164
1611 6103C	Resistor - 10K Ω 1/2W \pm 5%	11-165
1611 6122C	Resistor - 1.2K Ω 1/2W \pm 5%	11-166
1611 6431C	Resistor - 430 Ω 1/2W \pm 5%	11-167
1611 6512C	Resistor - 5.1K Ω 1/2W \pm 5%	11-168
1611 6820C	Resistor - 82 Ω 1/2W \pm 5%	11-169
2801 0010	Power Supply Cord - 250V 3A	7-119